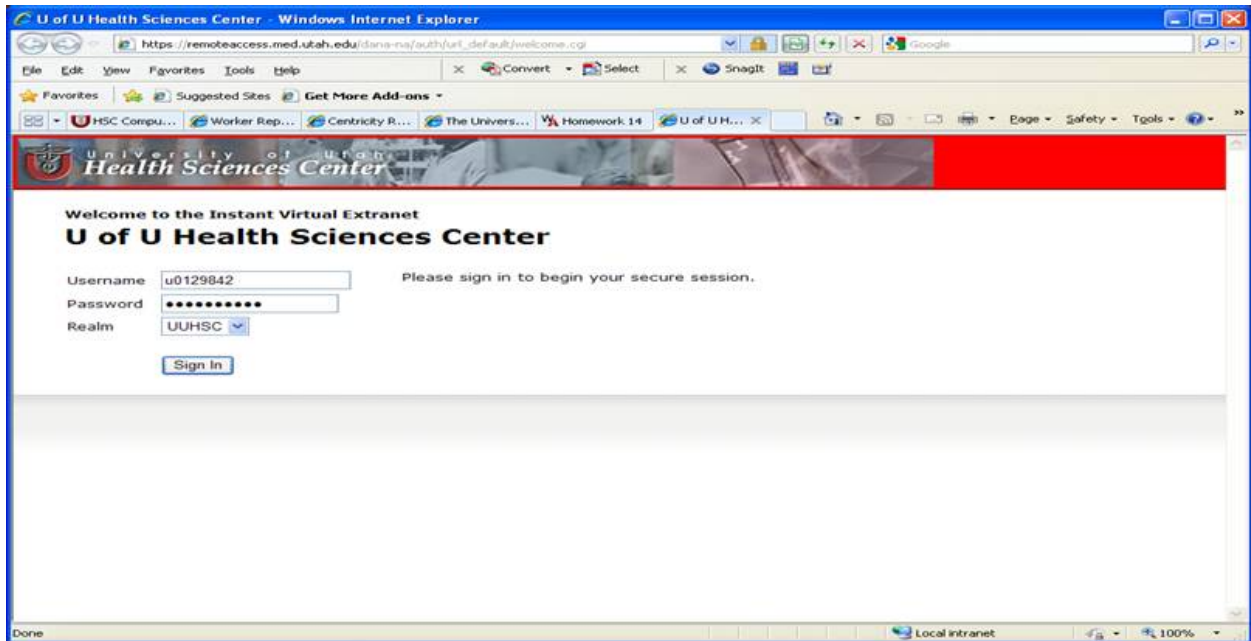
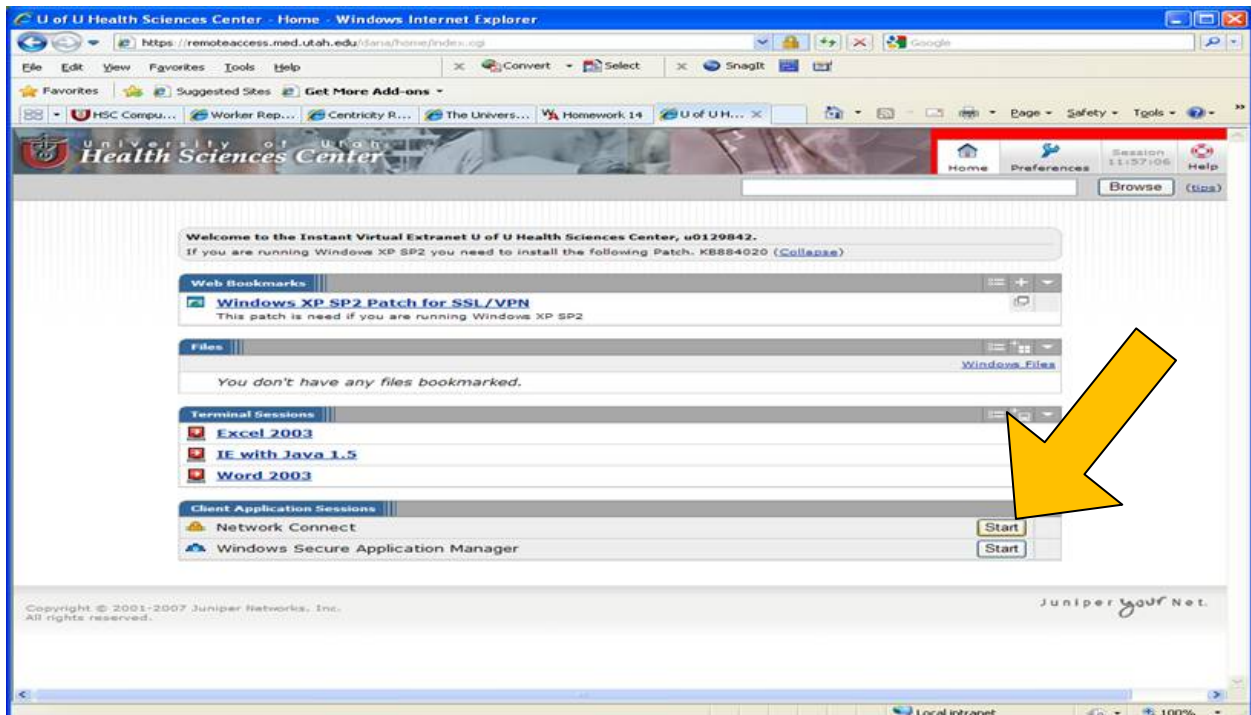


## A reminder on how to go about connecting to PACS when you're not here at the hospital.

1. Login to the VPN. Go to <https://remoteaccess.med.utah.edu> and sign in using your network (CIS) username and password.



2. Once you've logged in successfully, click on the Network Connect Start button near the bottom of the screen.



3. A small connection window will appear, then go away, once the VPN connection is established. A small, yellow padlock icon will appear down by your system clock to show that the VPN is connected. Congratulations! You're now connected through the VPN!



Small Connection Window



Padlock

4. Once you're connected through the VPN, you can go to the iSite Enterprise website (<http://pacsweb.med.utah.edu/ClientWeb/default.aspx>) and login using your network (CIS) username and password to view images.



**\*\*Note:** if you haven't used iSite on your home computer before, you may be prompted to download and install a couple of quick files to help iSite run properly. Just make sure that your browser's pop-up blocker is turned off, and watch for any prompts on your screen asking for you to Install and Run files.

And that's it! Now you can use PACS in the comfort of your own home.

If you have any questions or concerns, please contact Chad or Brandon.