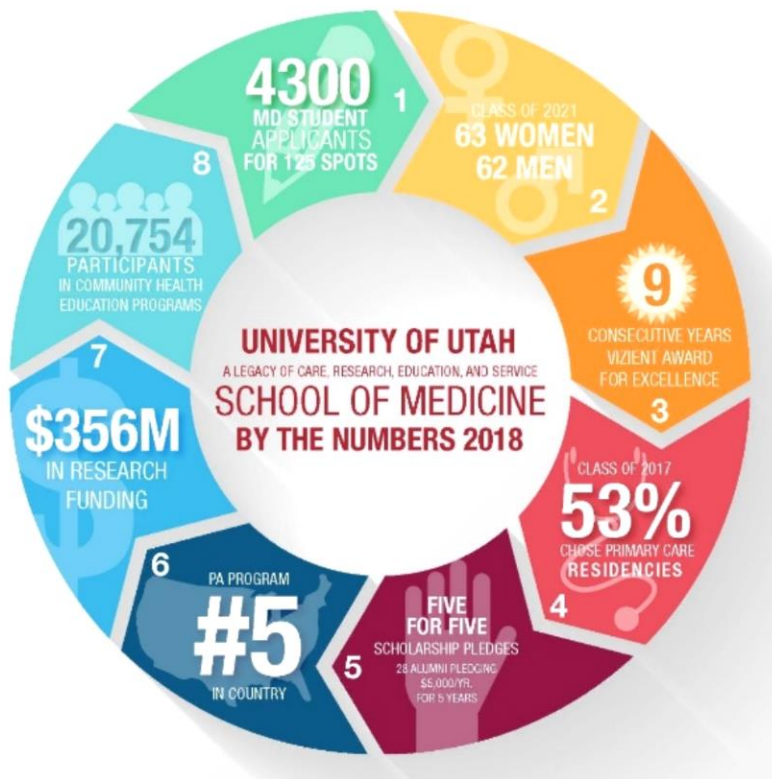


School of Medicine Stats Incoming class of 2022

Scholarship statistics:

SOM awarded 377 scholarships to about 345 students that totaled \$1,289,224 (some get more than one award). This increased from \$1,071,804 awarded in 2016 and \$600,000 awarded in 2015.

372 students (75% of all students) apply for scholarships, 345 received scholarship funding--92% of those who applied received some scholarship assistance. Average % of tuition and fees covered by scholarship dollars to recipients is just over 6%. Yearly scholarships range from full-ride scholarships to \$500. We would like to see that percentage raise to at least 10% of tuition and fees covered by scholarship.



Average scholarship given is \$3,500

Current debt class of 2017 upon graduation (not counting undergraduate debt) was \$173,812, this increased from \$166,985 in 2015-2016. However, for 2018 it was \$171,689, the first time it has decreased. This compares to \$182,000 average debt from public university medical schools nationwide (per AAMC statistics). Paying the standard graduate school interest rate of 6.5% off in 15 years increases the actual payment of this debt to almost \$270,000.

Average cost per year to educate a medical student \$79,000 from AMA 2017 study
Current University of Utah SOM tuition and fees totals: In State-\$40,505, Out of State - \$75,590

Entering Class 2022 statistics:

- Just under 4,300 applications
- 500 interviews
- 150 offers of acceptance
- 125 matriculated
- Yield rate = 0.80-Among the highest in the US
- Average MCAT 512.5-90th percentile
- Average GPA 3.75, A-
- 63 women, 62 men
- 221 women and 277 men across all classes
- Current class size – 125
- 100 positions committed to Utah residents, or non-resident who graduated from a Utah college, high school or university

- 10 positions reserved for residents of Idaho (contractual relationship)
- 15 non-residents
- 6 positions* reserved for MD/PhD students-may be Utah residents or non-residents

Medical students for the class of 2022 came from all Utah schools:

- University of Utah
- BYU
- USU
- UVU
- Weber State
- Westminster
- SUU
- Dixie State

Joint degrees offered in 2018 at U of U Medical School

- MD/PhD
- MD/MPH, MD/MSPH
- MD/MBA
- MD/MHA
- MPP/MHA

Community Service by medical students:

- Close to 20,000 hours of service yearly is provided by medical students:
- Maleheh Clinic
- Midvale CBC Community Clinic
- 4th Street Clinic
- Hope Clinic
- Other activities as organized by the Office of Inclusion and Outreach
- Medical student outreach to junior high and high school students about a career in medicine:
 - 246 K-12 students participated in classes run in 2017
 - 20,754 total participants involved in School of Medicine community outreach programs in 2017. Participants include Elementary students, Junior High students, High School Students, Rural Utah students and Community participants

Other School of Medicine Statistics:

- 99% Match Success in 2018
- 53% of the class of 2018 choose primary care residencies, one of the highest percentages in the country