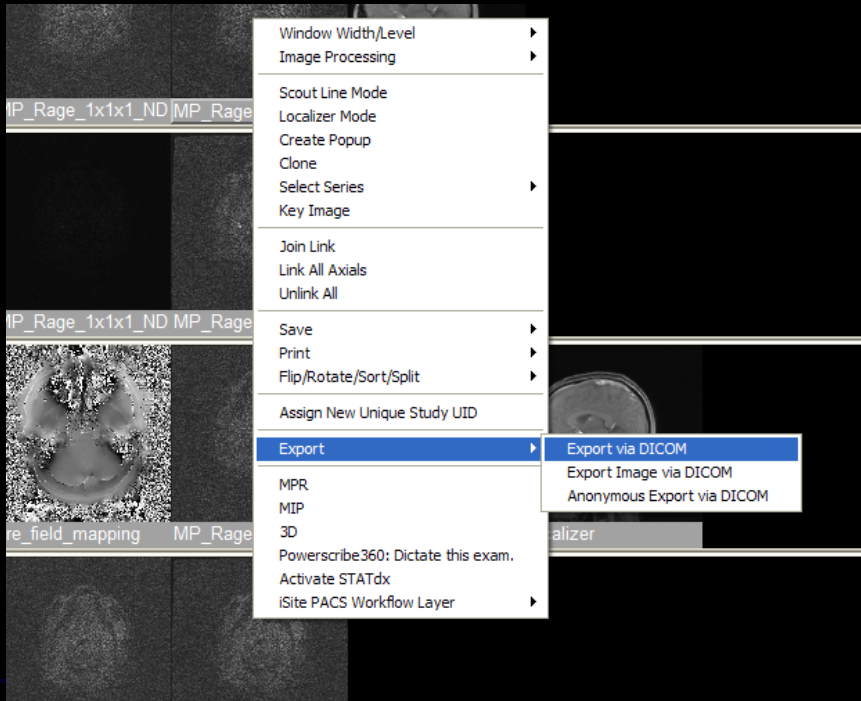


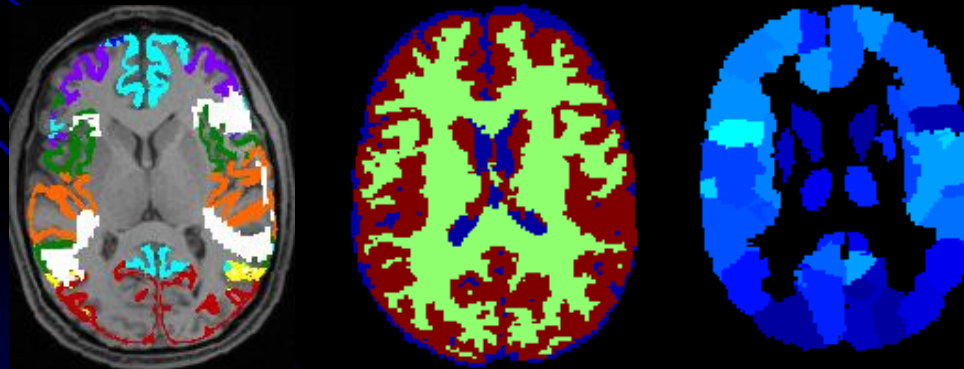
Go ahead and try this at home...



Right click on
MPRAGE:
Export via DICOM
to INC_Research3



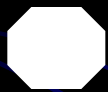
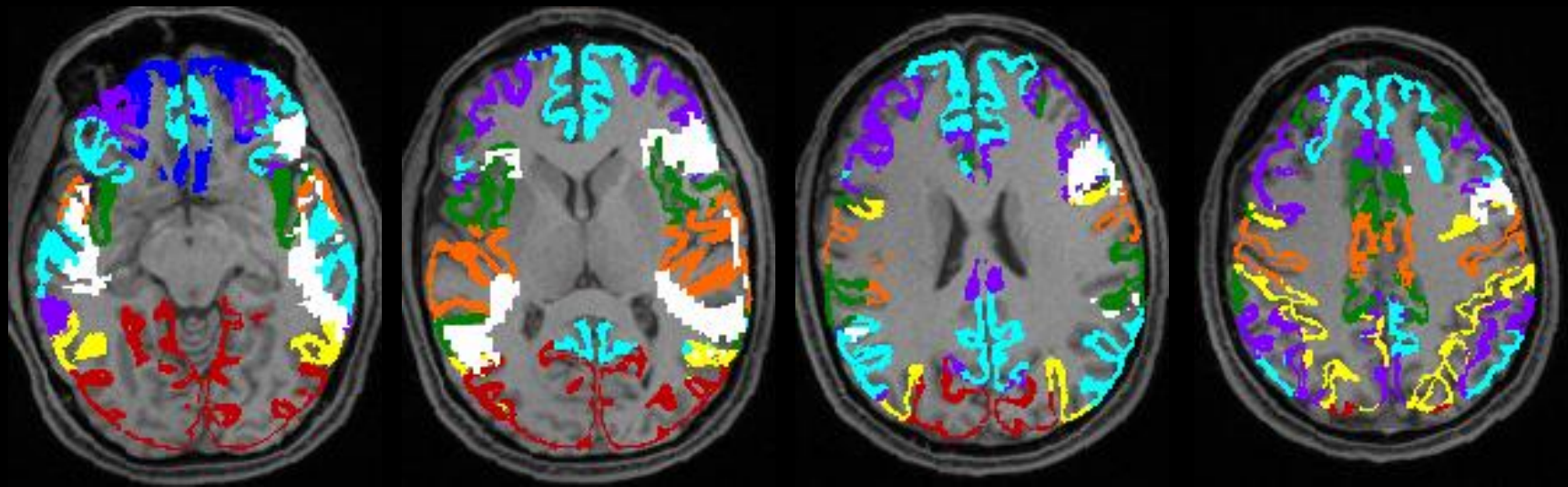
Wait 10 minutes...



Images show up
on PACS



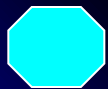
Map of Brain Network Anatomy



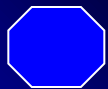
Language



Visual



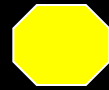
Default: Internal stimuli,
Internal narrative



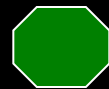
Limbic: Emotive processing,
Value judgments



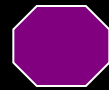
Sensorimotor, Auditory Cortex



Dorsal Attention: Conscious control
of attention, Frontal eye fields

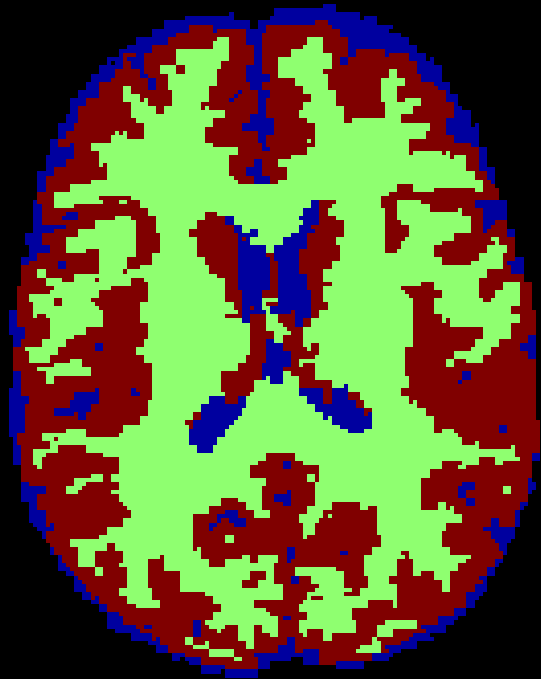


Salience Network: Novelty detection,
Stimulus salience processing

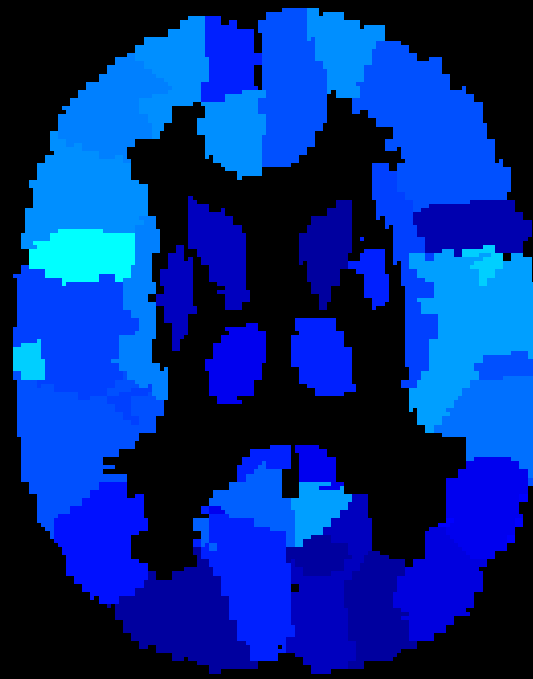


Executive Control: Abstract reasoning,
Response inhibition

Quantitative Atrophy Map



Segmented Gray Matter



Atrophy Map

